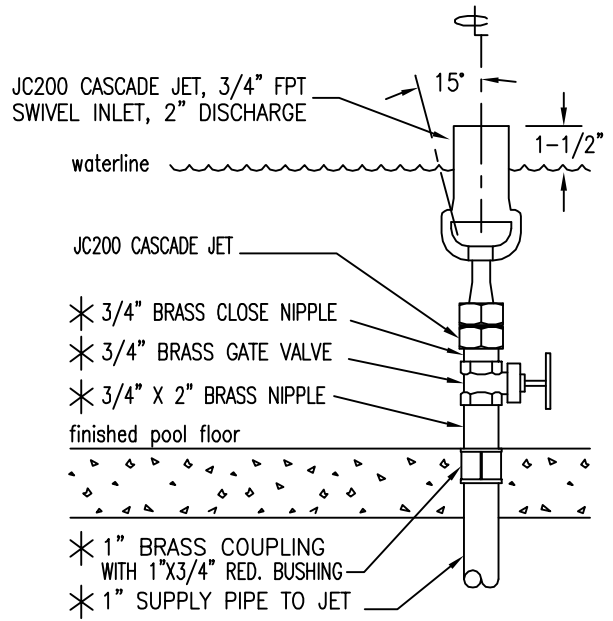
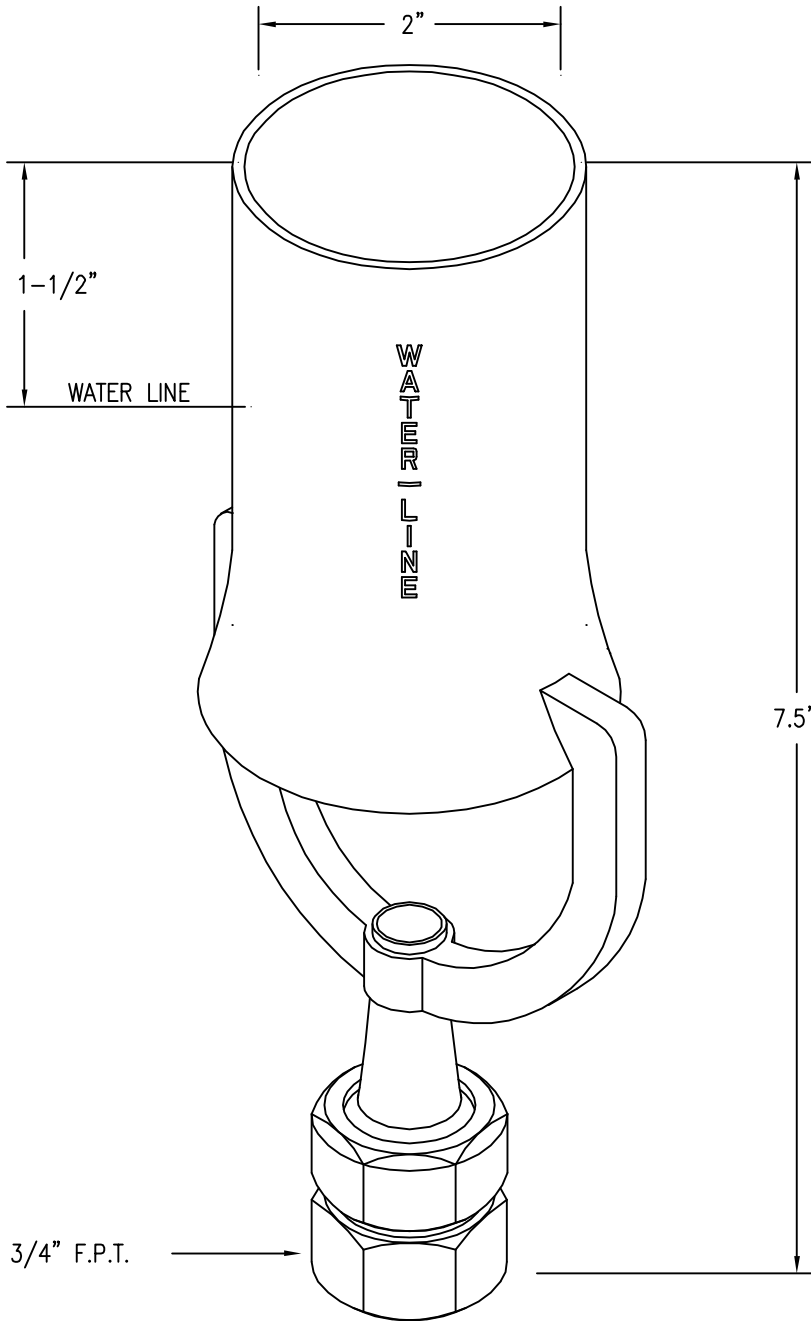


SPECIFICATIONS:

JC200 CAST BRONZE AND BRASS CASCADE JET – features a heavy 2" discharge and a 3/4" FPT inlet with swivel joint for angle adjustment. Optional items include a 3/4" brass balancing valve, a 3/4" brass close nipple, a 3/4" brass riser nipple, and a 3/4" brass coupling.

FLOW DATA:

HEIGHT	GPM	TDH
12"	12	2.5
18"	13.5	6
24"	16.5	12
30"	19	16
36"	21	23
48"	24	28
60"	27	35
72"	30	42



TYPICAL INSTALLATION DETAIL

* OPTIONAL ITEMS BY HALL



JC200

Cast Bronze & Brass Cascade Jet

5500 N.W.22 AVE. FT. LAUDERDALE, FL 33309

PHONE: 1-800-777-4255 * 1-954-484-8530