

PROVIDE AN 60A, 208/120 VAC, 3PH, 4 WIRE  
5KA SHORT CIRCUIT RATED SERVICE  
FOR APPROX. 42 AMPS TOTAL CONNECTED LOADS



5500 N.W. 22nd Avenue  
Ft. Lauderdale, Florida 33309  
1-800-777-4255 \* 954-484-8530

HALL FOUNTAINS, INC. is not responsible for the installation of the equipment shown on this drawing. Any equipment to be ordered and any installation to be made from this drawing must be independently verified by the buyer's architect or engineer to determine that the same meets all governmental requirements and is acceptable for its intended application. The only liability assumed by HALL FOUNTAINS, INC. is for the quality of the equipment supplied as set forth in the materials warranty.

All circuits between the fountain controller and any sensor MUST be a continuous run. Make no breaks in the wiring, use no pull boxes.

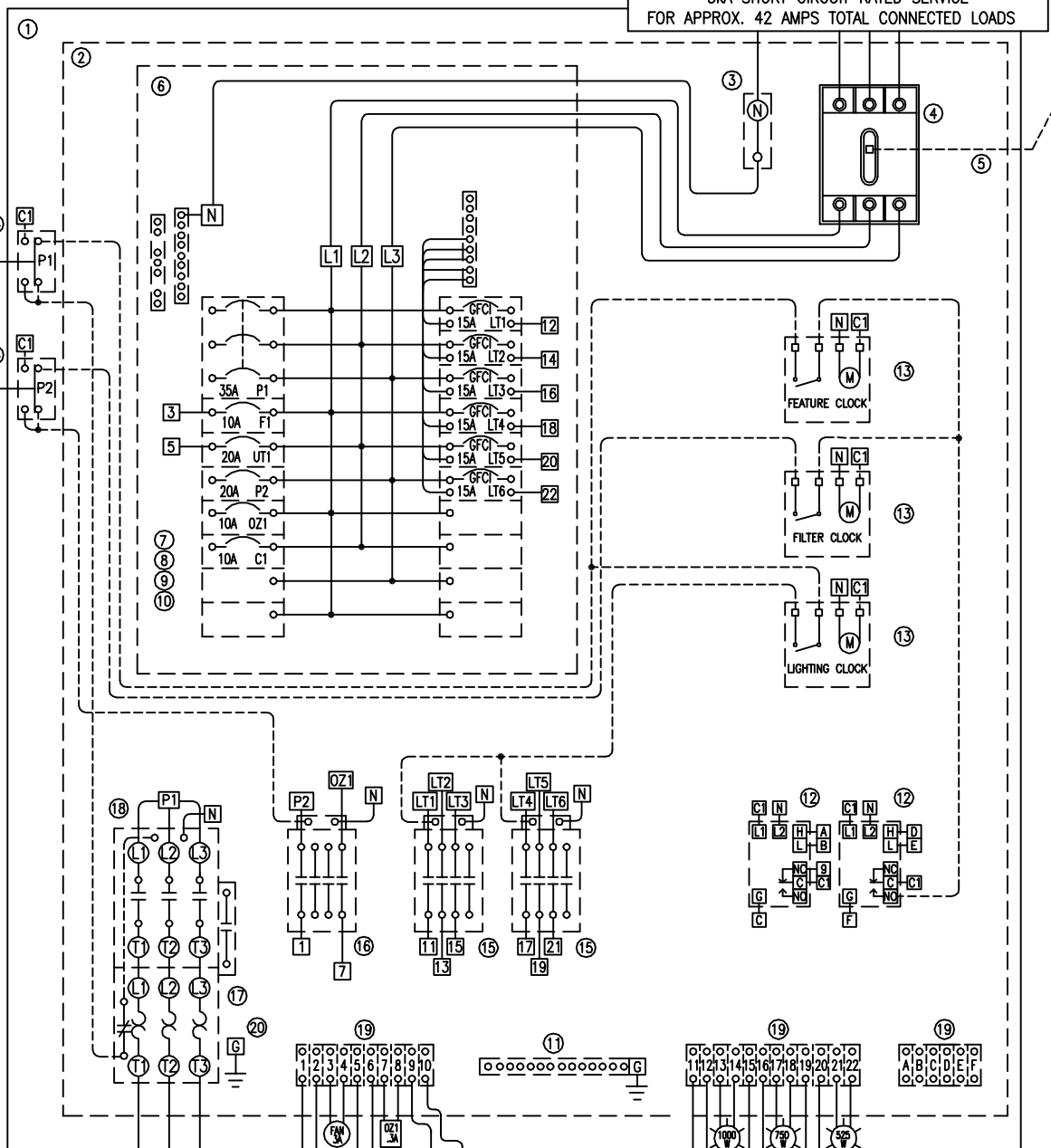
Installation of equipment is to be BY OTHERS

**WARNING!**  
ELECTRICAL SHOCK HAZARD

HALL FOUNTAINS, INC. STRIVES TO MANUFACTURE FOUNTAIN EQUIPMENT OF THE HIGHEST QUALITY POSSIBLE, BUT IS STILL CONCERNED WITH THE FACT THAT WATER AND ELECTRICITY CAN CONSTITUTE A POTENTIAL ELECTRICAL SHOCK HAZARD.  
FOUNTAIN ELECTRICAL EQUIPMENT MUST BE INSTALLED BY QUALIFIED, KNOWLEDGEABLE PEOPLE WITH THE UTMOST OF CARE AND IN STRICT ACCORDANCE WITH ARTICLE 680 OF THE NATIONAL ELECTRICAL CODE AND ANY OVERRIDING LOCAL CODES THAT MAY APPLY.

**Controller Legend**

- LOAD CONDUCTOR
- - - CONTROL CIRCUIT CONDUCTOR
- NEUTRAL
- CONTROLLER COMPONENT (AS NOTED)
- TERMINAL NUMBER (AS NOTED)
- Ⓜ 10A, 120 VAC FROM CONTROL BREAKER
- Ⓝ TO NEUTRAL BAR ON LOAD CENTER



Typical  
UL Listed  
Control  
Panel

**Components List**

ITEM	QTY.	CATALOG NO.	MANUFACTURER	DESCRIPTION
1	1	A36R3012HCR	HOFFMAN	NEMA TYPE 3R ELECTRICAL ENCLOSURE
2	1	A-36P30	HOFFMAN	ELECTRICAL ENCLOSURE BACKING PANEL
3	1	1411300	MARATHON	1 POLE NEUTRAL BLOCK, 600V, 115A. CU, 90A. AL
4	1	0T-60E3	ABB	3 POLE MAIN DISCONNECT, 600V., 60A., CU ONLY
5	1	0HB65J5	ABB	MAIN DISCONNECT OPERATING HANDLE
6	1	Q0320L125	SQUARE-D	20-SPACE 125 AMP, 3 PHASE LOAD CENTER
7	3	Q0110	SQUARE-D	10 AMP, 1 POLE CIRCUIT BREAKER
8	6	Q0115GFI	SQUARE-D	15 AMP, 1 POLE CIRCUIT BREAKER WITH GROUND FAULT INTERRUPTER
9	1	Q0335	SQUARE-D	35 AMP, 3 POLE CIRCUIT BREAKER
10	2	Q0120	SQUARE-D	20 AMP, 1 POLE CIRCUIT BREAKER
11	1	PK15GTA	SQUARE-D	GROUNDING TERMINAL BAR
12	1	1D6BIDOR6D06	WARRICK	SINGLE FUNCTION ELECTRONIC FLUID LEVEL CONTROL
13	3	FM/1 STUZ	GRASSLIN	120V, 24 HOUR TIME CONTROL
14	2	800TC-J2A	ALLEN-BRADLEY	NEMA TYPE 4 & TYPE 13, THREE POSITION SELECTOR SWITCH
15	2	100C23D400	ALLEN-BRADLEY	23 AMP, 4 POLE MAGNETIC CONTACTOR W/120V COIL
16	1	100C16D400	ALLEN-BRADLEY	16 AMP, 4 POLE MAGNETIC CONTACTOR W/120V COIL
17	1	193-EEFD	ALLEN-BRADLEY	3 PHASE ADJUSTABLE OVERLOAD
18	1	100C30D10	ALLEN-BRADLEY	3 PHASE MAGNETIC CONTACTOR W/120V COIL
19	28	925	BUCHANAN	SECTIONED TERMINAL BLOCKS
20	1	L70	BLACKBURN	GROUNDING TERMINAL LUG

**Terminal Bar Coding**

- 11 20 AMP, 120 VAC, FILTER PUMP (P2) LOAD
- 12 NEUTRAL FOR (P2)
- 13 15 AMP, 120 VAC, EXHAUST FAN "F1" LOAD CIRCUIT
- 14 NEUTRAL FOR "F1"
- 15 15 AMP, 120 VAC, UTILITY CIRCUIT "UT1"
- 16 NEUTRAL FOR "UT1"
- 17 15 AMP, 120 VAC, OZONATOR CIRCUIT "OZ1"
- 18 NEUTRAL FOR "OZ1"
- 19 15 AMP, 120 VAC (C1), WATER SUPPLY SOLENOID VALVE
- 20 WATER SUPPLY SOLENOID VALVE NEUTRAL
- 21 1000W, 15A GFCI, 120VAC TO "LT1" LIGHTING CIRCUIT
- 22 NEUTRAL FOR "LT1"
- 23 1000W, 15A GFCI, 120VAC TO "LT2" LIGHTING CIRCUIT
- 24 NEUTRAL FOR "LT2"
- 25 750W, 15A GFCI, 120VAC TO "LT3" LIGHTING CIRCUIT
- 26 NEUTRAL FOR "LT3"
- 27 750W, 15A GFCI, 120VAC TO "LT4" LIGHTING CIRCUIT
- 28 NEUTRAL FOR "LT4"
- 29 450W, 15A GFCI, 120VAC TO "LT5" L.V. LIGHTING CIRCUIT TRANS.
- 30 NEUTRAL FOR "LT5"
- 31 450W, 15A GFCI, 120VAC TO "LT6" L.V. LIGHTING CIRCUIT TRANS.
- 32 NEUTRAL FOR "LT6"
- 33 WHITE WIRE FROM WATER MAKEUP SENSOR
- 34 BLACK WIRE FROM WATER MAKEUP SENSOR
- 35 GREEN WIRE FROM WATER MAKEUP SENSOR (NOT A BOND)
- 36 WHITE WIRE FROM LOW WATER CUTOFF SENSOR
- 37 BLACK WIRE FROM LOW WATER CUTOFF SENSOR
- 38 GREEN WIRE FROM LOW WATER CUTOFF SENSOR (NOT A BOND)

**Feature Fountain Controller**

DATE: 00/00/00  
DRWG. NO.: C-XXXXX