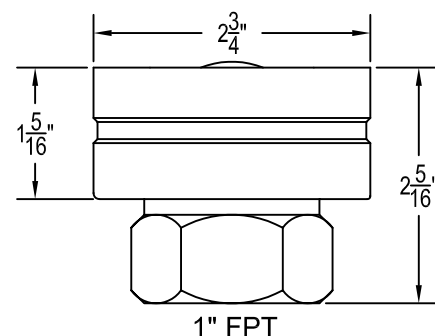
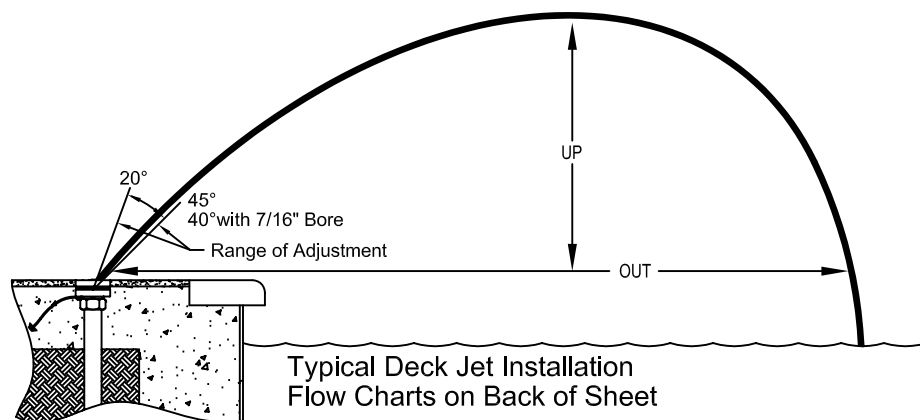


XFJ45-P SERIES DECK JET (Chrome Plated)

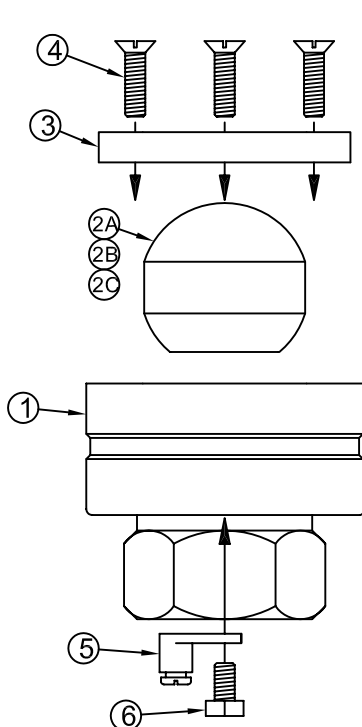


XFJ45-P Series Deck Jets are an adjustable floor jet constructed of chrome-plated bronze and brass. Using the same technologies we developed over the past 40 years, the XFJ45-P is one of the many water features available in our XSTREAM series of fountain jets. The XSTREAM series has been tailored to meet the needs of today's pool builders and residential contractors.

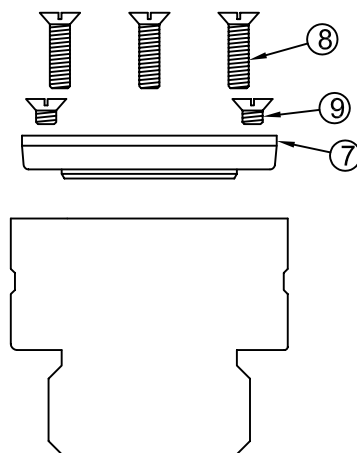
XFJ45-P Series jets can be installed in a singular fashion to create a focal point in your pool or in multiples to create more dramatic water feature effects. You can utilize your existing filter system with a by-pass valve to supply the jet(s) with filter return water, or dedicate a separate pump to the deck jets to allow for independent control from the filter system. Jets can be installed using a balanced manifold with a single regulating valve or with individual lines and valves allowing for each jet to be regulated independently. Manifolding and pipe sizing is explained in more detail on the Deck Jet installation sheet.

XFJ45-P Series Jets are available in three discharge sizes 5/16", 3/8" and 7/16". Jets are supplied with a chrome-plated finish and is very bright and reflective in the sun. Jets can also be purchased with a natural bronze and brass finish that will turn to a dark brown patina and may green tones (XFJ45 Series).

When installed in a level deck, the XFJ45-P can be adjusted from 20° off of vertical to an outward angle of 45° (40° with the 7/16" bore). Larger discharge jets and greater quantities, require more water. Water requirements can be calculated by using the flow charts on the backside of this sheet. Also refer to the Deck Jet Installation Sheet for step by step installation instructions.



ITEM	PART#	DISCRIPTION	QTY
①	XFJ-BCP	Bronze body with 1" FPT PLATED	1
②A	XFJ45-5CP	Brass ball jet 5/16" 45° PLATED	1
②B	XFJ45-6CP	Brass ball jet 3/8" 45° PLATED	
②C	XFJ45-7CP	Brass ball jet 7/16" 45° PLATED	
③	XFJ-R45CP	Bronze locking ring 45° PLATED	1
④	750CP	10-24x3/4 FHMS CPBRASS	3
⑤	GL1	Copper Ground Lug	1
⑥	SS375	10-24x3/8 HHCS 18-8SS	1
⑦	XFJ-CAP	Block-Off Cover	1
⑧	PS750S	10x3/4 FHMS 18-8SS	3
⑨	PS250S	10x1/4 FHMS 18-8SS	2



XFJ45-P SERIES PARTS LIST



5500 NW 22nd Ave.

Fort Lauderdale, FL 33309

800-777-4255 Fax 954-484-2393

www.hallxstreams.com

Model Number

XFJ45-312P

XFJ45-375P

XFJ45-437P

XFJ45-P SERIES DECK JET FLOW CHARTS

XFJ45-312-P (5/16" BORE)

		ANGLE IN DEGREES						
		20°	25°	30°	35°	40°	45°	
SIZE OF JET	10'	6.7 14.5 172"	7.1 15 209"	7.5 16.5 260"	8 18 310"	8.5 20 380"	9.5 24 420"	GPM TDH DIS.
	9'	6.4 12.5 152"	6.7 12.5 190"	7 14 230"	7.5 16 280"	8 18 330"	8.8 21 390"	GPM TDH DIS.
	8'	6 11 134"	6.3 11 167"	6.6 13 210"	7 14.5 250"	7.5 15.5 295"	8.1 17.5 340"	GPM TDH DIS.
	7'	5.6 9.5 118"	5.9 9.5 148"	6.1 10.5 185"	6.5 12 220"	6.9 13.5 256"	7.7 16 310"	GPM TDH DIS.
HEIGHT UP IN FEET	6'	5.2 8.5 103"	5.4 8.5 128"	5.7 9.5 160"	6 10.5 190"	6.3 11.5 222"	7 13 268"	GPM TDH DIS.
	5'	4.7 7 86"	4.9 7 107"	5.2 7.5 132"	5.5 8.5 160"	5.9 9.5 192"	6.5 11 230"	GPM TDH DIS.
	4'	4.2 5.5 66"	4.4 5.5 85"	4.6 6 106"	4.9 6.5 130"	5.2 7.5 154"	5.7 9 186"	GPM TDH DIS.
	3'	3.6 3.5 50"	3.8 3.5 64"	4 4.5 81"	4.2 5.5 100"	4.4 6 117"	4.8 6.5 140"	GPM TDH DIS.
	2'	2.9 2.5 34"	3 2.5 44"	3.2 2.5 53"	3.4 3 67"	3.6 3.5 81"	4 4 96"	GPM TDH DIS.
	1'	2.1 1.5 17"	2.2 1.5 22"	2.3 1.5 29"	2.4 1.5 35"	2.5 2 43"	2.7 2 51"	GPM TDH DIS.

XFJ45-375-P (3/8" BORE)

		ANGLE IN DEGREES						
		20°	25°	30°	35°	40°	45°	
SIZE OF JET	10'	9.9 14.5 172"	10.2 15 209"	10.6 16.5 260"	11.2 18 310"	11.9 20 380"	13 24 420"	GPM TDH DIS.
	9'	9.4 12.5 152"	9.7 12.5 190"	10.1 14 230"	10.5 16 280"	11.4 18 330"	12.2 21 390"	GPM TDH DIS.
	8'	8.8 11 134"	9.1 11 167"	9.5 13 210"	10 14.5 250"	10.8 15.5 295"	11.4 17.5 340"	GPM TDH DIS.
	7'	8.1 9.5 118"	8.5 9.5 148"	8.9 10.5 185"	9.3 12 220"	10.1 13.5 256"	10.7 16 310"	GPM TDH DIS.
HEIGHT UP IN FEET	6'	7.5 8.5 103"	7.8 8.5 128"	8.1 9.5 160"	8.5 10.5 190"	9.3 11.5 222"	9.9 13 268"	GPM TDH DIS.
	5'	6.9 7 86"	7.2 7 107"	7.5 7.5 132"	7.8 8.5 160"	8.5 9.5 192"	9.1 11 230"	GPM TDH DIS.
	4'	6.2 5.5 66"	6.3 5.5 85"	6.7 6 106"	7 6.5 130"	7.5 7.5 154"	8.2 9 186"	GPM TDH DIS.
	3'	5.2 3.5 50"	5.4 3.5 64"	5.6 4.5 81"	6.1 5.5 100"	6.5 6 117"	7 6.5 140"	GPM TDH DIS.
	2'	4.2 2.5 34"	4.4 2.5 44"	4.7 2.5 53"	4.9 3 67"	5.3 3.5 81"	5.8 4 96"	GPM TDH DIS.
	1'	3 1.5 17"	3.1 1.5 22"	3.3 1.5 29"	3.5 1.5 35"	3.8 2 43"	4 2 51"	GPM TDH DIS.

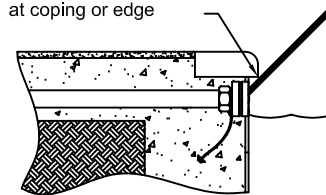
GPM = GALLONS PER MINUET
TDH = HEAD IN FEET AT THE JET
DIS. = DISTANCE OUT IN INCHES

XFJ45-437-P (7/16" BORE)

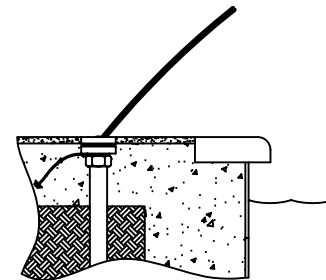
		ANGLE IN DEGREES					
		20°	25°	30°	35°	40°	
SIZE OF JET	10'	13.2 14.5 172"	13.5 15 209"	14.2 16.5 260"	15 18 310"	16 20 380"	GPM TDH DIS.
	9'	12.5 12.5 152"	12.8 12.5 190"	13.5 14 230"	14.2 16 280"	15 18 330"	GPM TDH DIS.
	8'	11.9 11 134"	12.2 11 167"	12.7 13 210"	13.2 14.5 250"	14 15.5 295"	GPM TDH DIS.
	7'	11.3 9.5 118"	11.5 9.5 148"	11.9 10.5 185"	12.5 12 220"	13.1 13.5 256"	GPM TDH DIS.
HEIGHT UP IN FEET	6'	10.3 8.5 103"	10.6 8.5 128"	11.1 9.5 160"	11.6 10.5 190"	12.3 11.5 222"	GPM TDH DIS.
	5'	9.5 7 86"	9.7 7 107"	10.1 7.5 132"	10.6 8.5 160"	11.3 9.5 192"	GPM TDH DIS.
	4'	8.4 5.5 66"	8.6 5.5 85"	9 6 106"	9.5 6.5 130"	10 7.5 154"	GPM TDH DIS.
	3'	7.2 3.5 50"	7.4 3.5 64"	7.8 4.5 81"	8.3 5.5 100"	8.8 6 117"	GPM TDH DIS.
	2'	5.8 2.5 34"	6 2.5 44"	6.3 2.5 53"	6.8 3 67"	7 3.5 81"	GPM TDH DIS.
	1'	4 1.5 17"	4.2 1.5 22"	4.5 1.5 29"	4.7 1.5 35"	5 2 43"	GPM TDH DIS.

GPM = GALLONS PER MINUET
TDH = HEAD IN FEET AT THE JET
DIS. = DISTANCE OUT IN INCHES

Insure Clearance
at coping or edge



Tile Line Installation



Deck Installation

NOTE: Jets going 5' high or less in height meet the HRS standards set in some states of a maximum jet discharge velocity of 20 feet per second when used in a play fountain or kiddie pool.

ALL HEAD PRESSURES ARE AT THE JET. SYSTEM LINE AND FITTING LOSSES MUST BE ADDED FOR PROPER OPERATION.



A Division of Hall Fountains, Inc.

5500 NW 22nd Ave.

Fort Lauderdale, FL 33309

800-777-4255 Fax 954-484-2393

www.hallxstreams.com

Model Number

XFJ45-312P

XFJ45-375P

XFJ45-437P