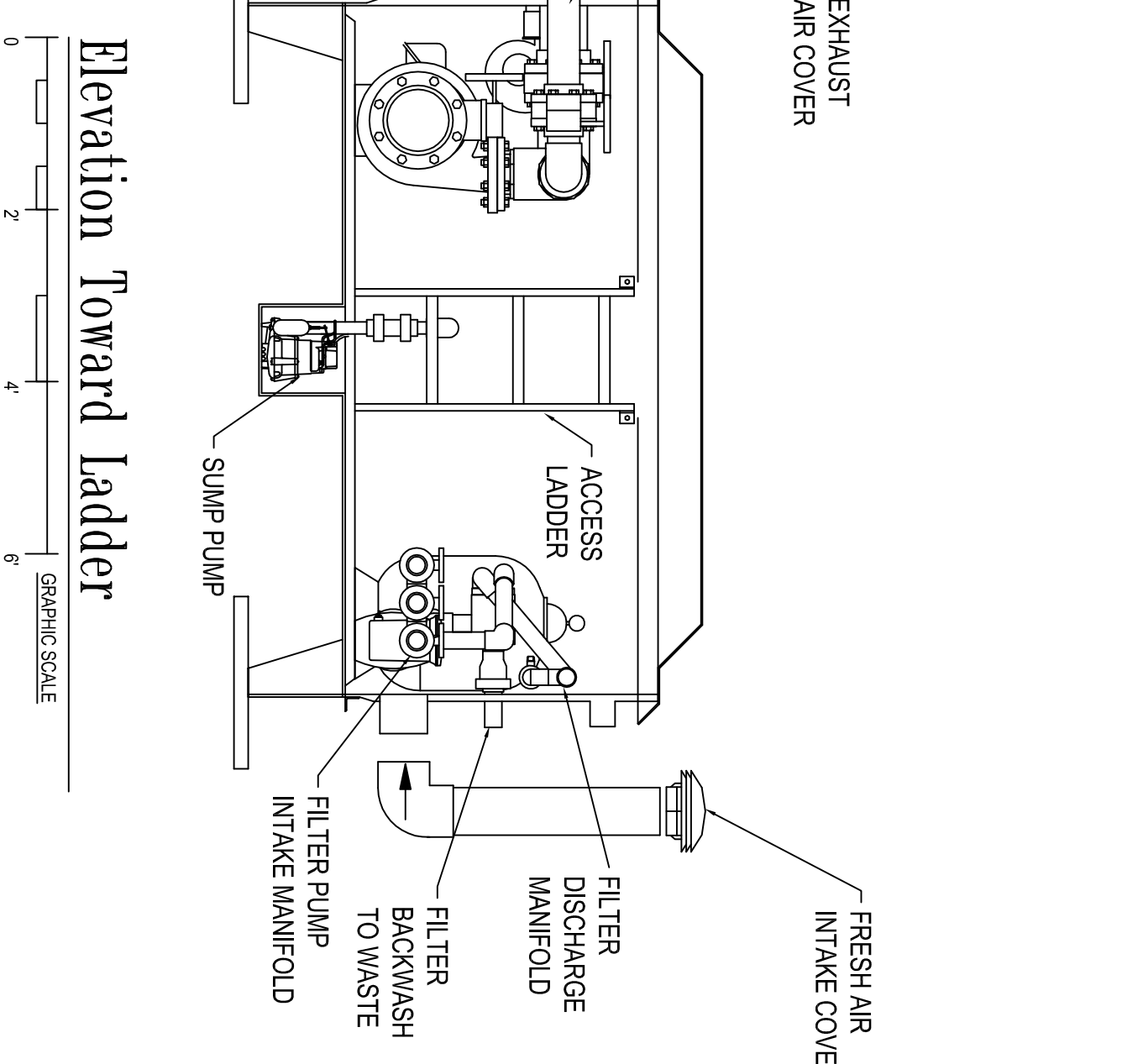
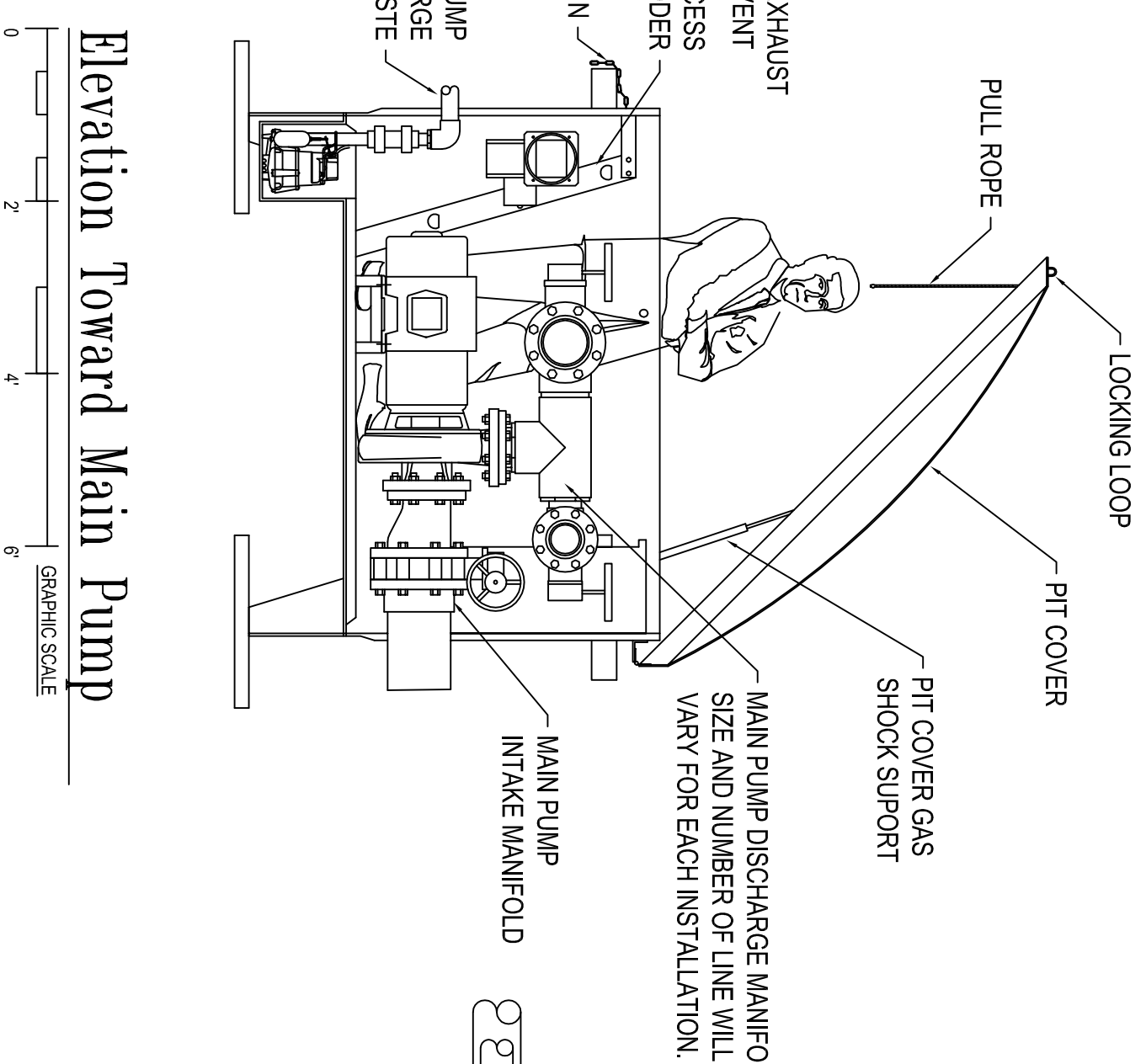
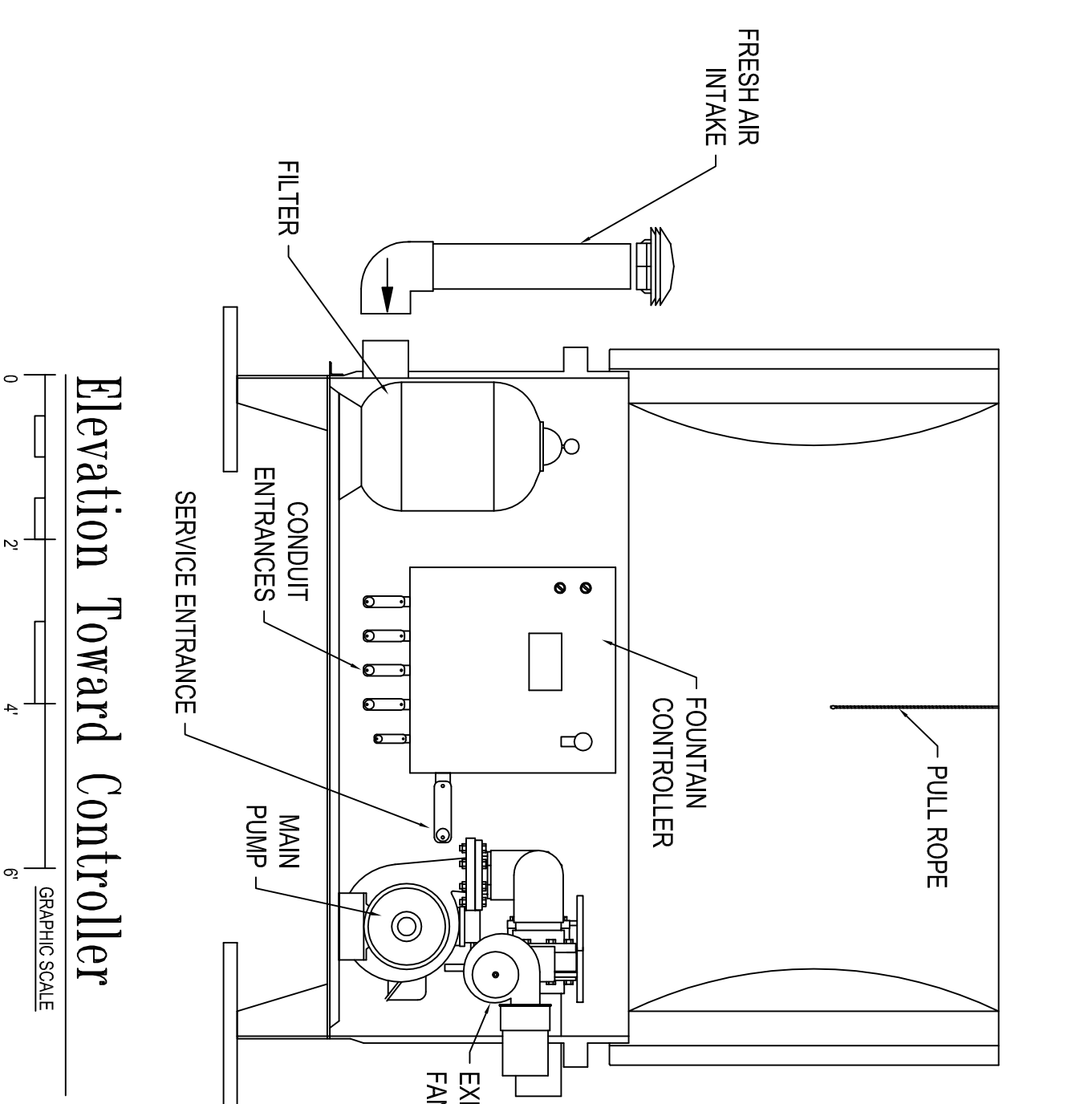


# Typical Equipment Pit Installation and Layout (Pit Size and Equipment Installed Will Vary)



**NOTE:** Power **MUST** be supplied to sump at time of installation and sump pump discharge line piped away from pit to protect equipment.

LIFTING STRAPS AROUND BRACES OR UNDER FLOOR OF PIT TO SET UNIT IN HOLE. IF NECESSARY LID CAN BE REMOVED DURING SETTING OF PIT BY REMOVING BOLTS FROM HINGES AND DETACHING LID PROPS. LID SHOULD BE REPLACED AFTER PIT IS IN PLACE. MAKE SURE PIT IS LEVEL FOR PROPER DRAINAGE TO SUMP PUMP.

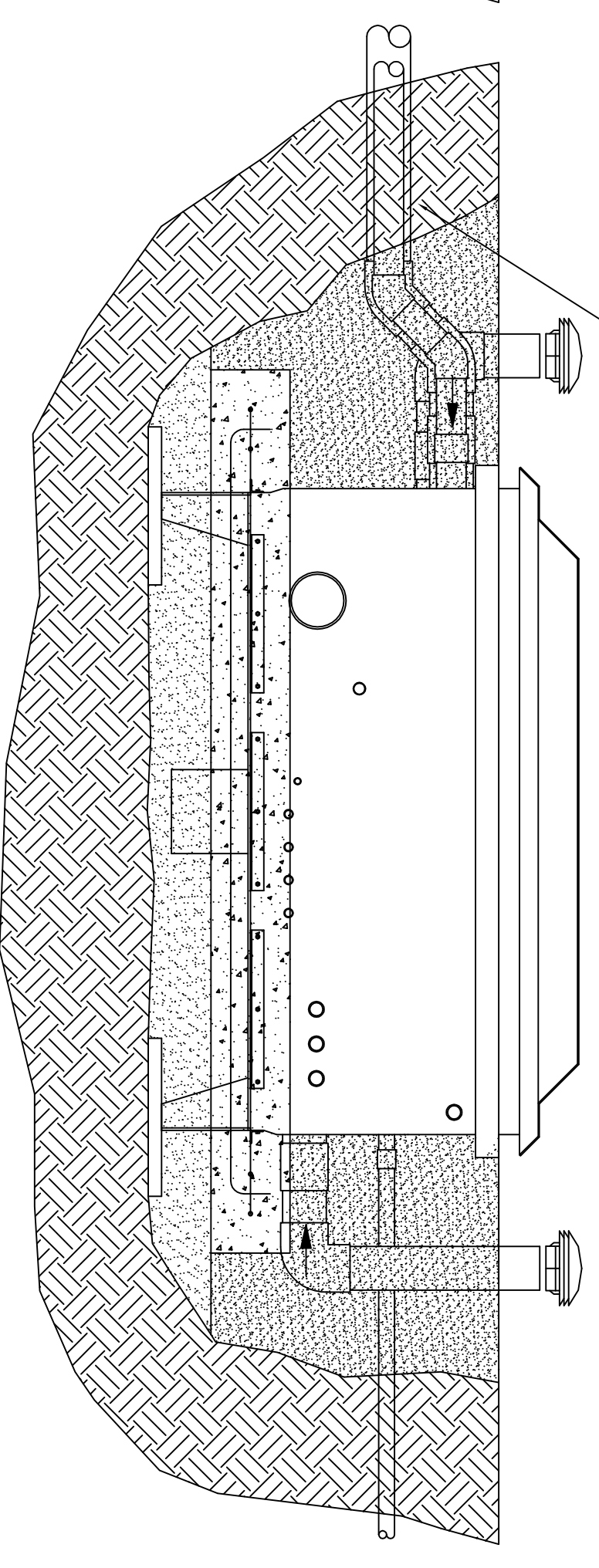
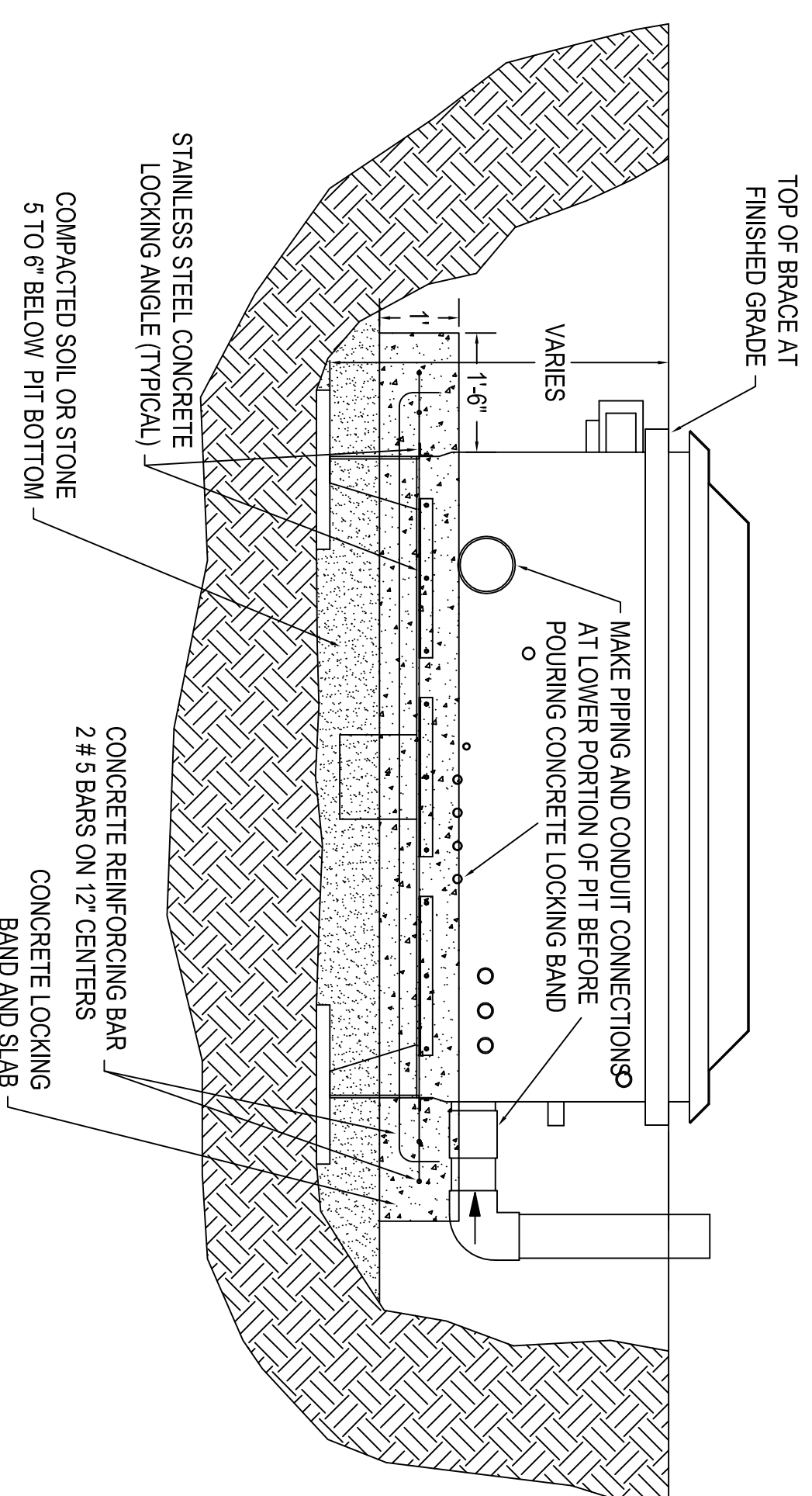
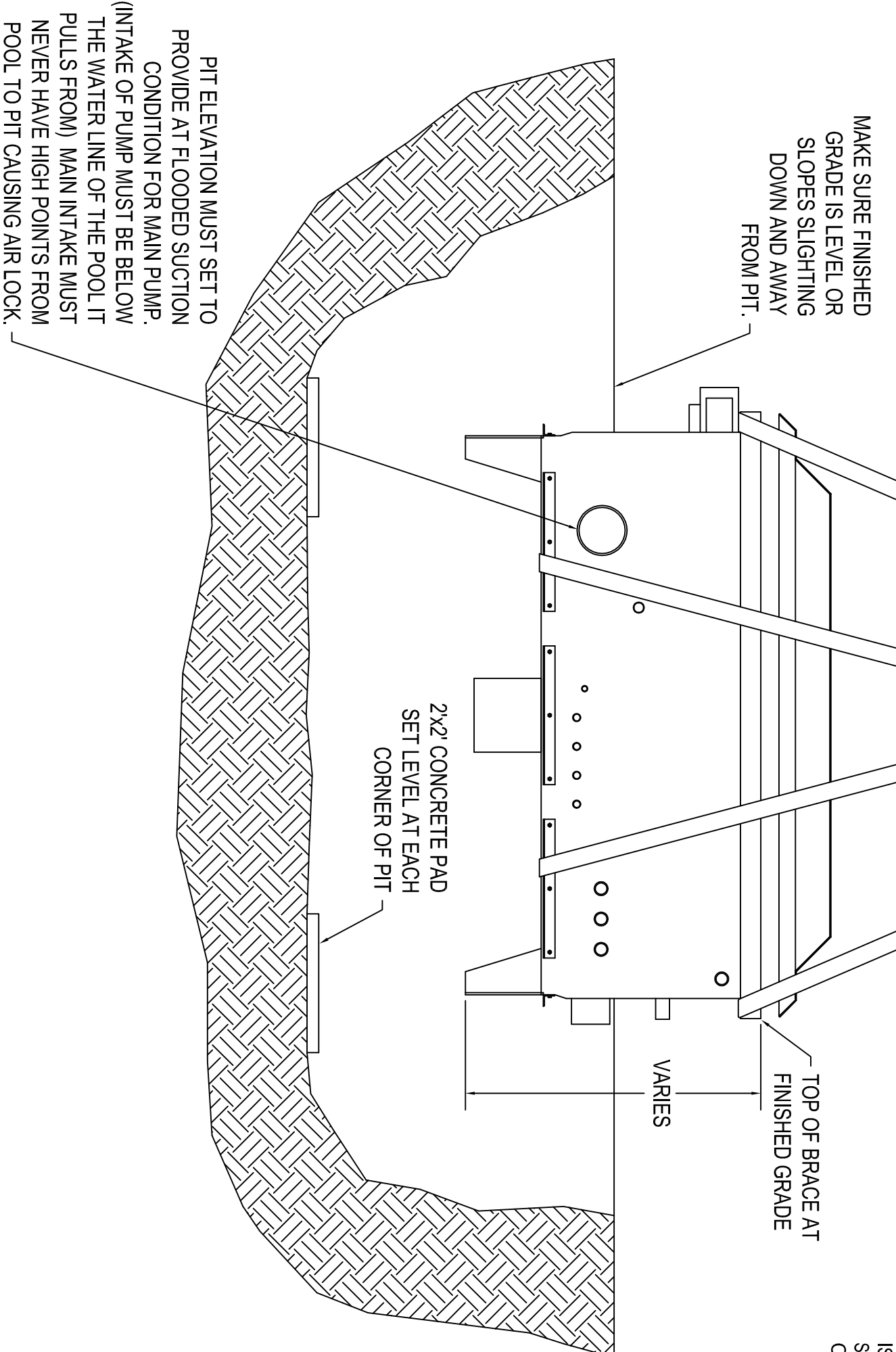
EXCAVATE HOLE AT DESIRED LOCATION OF PIT. DEPTH OF HOLE FROM FINISHED GRADE SHOULD BE THE DISTANCE FROM THE TOP OF THE UPPER BRACE TO THE BOTTOM OF PIT LEG PLUS THE THICKNESS OF THE CONCRETE SETTING HOLES. HOLE SHOULD BE LONG AND WIDE ENOUGH TO HAVE ROOM TO MAKE SUMP PUMP CONNECTIONS. CONDUITS SHOULD BE SET AT GRADE OR SLIGHTLY BELOW GRADE. CONDUITS SHOULD BE SET AT EACH CORNER AND LEVEL. PIT SHOULD NOT BE SET UNTIL SUCH TIME THAT PIPING & CONDUIT CONNECTIONS CAN BE MADE. PIT SHOULD BE LIFTED WITH STRAPS EITHER UNDER BOTTOM OR AROUND UPPER BRACE AS SHOWN IN DRAWING. BE CAREFUL THAT STRAPS DO NOT CAUSE UNDESIRED PRESSURE ON PIPING AND CONDUIT CONNECTIONS OR ON PIT COVER. COVER MAY BE REMOVED IF NECESSARY BY REMOVING BOLTS FROM HINGES AND DISCONNECTING SHOCK SUPPORTS OR BLOCKING MAY BE USED. AFTER SETTING PIT, CHECK FOR LEVEL AND ORIENTATION AND ADJUST IF NEEDED. PIPING AND CONDUIT CONNECTIONS ARE TO BE MADE AS SOON AS POSSIBLE. IF SERVICE POWER IS NOT AVAILABLE AT TIME OF INSTALLATION ON PIT, TEMPORARY POWER MUST BE SUPPLIED TO SUMP PUMP AND WASTE LINE FROM PIT. IF PIT WILL BE LEFT UNATTENDED FOR ANY LENGTH OF TIME AN AUTOMATIC SUMP PUMP SHOULD BE PLACED IN PIT HOLE TO PROTECT AGAINST FLOODING AND DAMAGING SYSTEM BEFORE COMPLETE INSTALLATION. IF COVER HAS BEEN REMOVED DURING SETTING OF PIT, IT SHOULD BE REPLACED AND NOT WORKING ON SYSTEM TO PREVENT RAIN WATER FROM DAMAGING EQUIPMENT IN PIT. MAKE SURE THE SOIL IS COMPACTED GOOD BEFORE PROCEEDING TO THE NEXT STEPS OF CONCRETE LOCKING BAND AND PIPING AND CONDUIT CONNECTIONS.

AFTER PIT IS IN PLACE ON CONCRETE PADS AND LEVELLED, BACK FILL UNDER PIT WITH STONE OR SOIL AND COMPACT TO A LEVEL OF 3" TO 6" BELOW PIT BOTTOM. BEFORE FORMING FOR LOCKING SLAB AND BAND, ANY PIPING AND CONDUIT CONNECTIONS SHOULD BE MADE NEAR THE BOTTOM OF THE PIT. MAKE SURE THERE IS ONE CONDUIT LEG FROM THE MAIN PUMP TO THE PIT TO PROTECT EQUIPMENT DURING SHIPMENT AND SETTING OF PIT. REMOVE CAPS AND MAKE LOWER CONNECTIONS. THE USE OF HEAVY DUTY GRAY PVC GUE IS RECOMMENDED. FRESH AIR INTAKE LINE SHOULD STUB UP APPROXIMATELY 6 INCHES ABOVE FINISHED GRADE AND BE CAPPED IN SAME MANNER. THE SUPPLIED VENT COVER SHOULD BE INSTALLED AFTER ALL INSTALLATION WORK IS COMPLETED AS THEY CAN BE EASILY BE DAMAGED DURING CONSTRUCTION. THE CONCRETE SLAB AND LOCKING BAND SHOULD BE REINFORCED WITH STEEL REBAR AROUND AND UNDER PIT. CONCRETE SHOULD BE PUMPED UNDER PIT IF POSSIBLE TO COMPLETELY FILL VOID BETWEEN PIT BOTTOM AND COMPACTED STONE OR SOIL BELOW PIT. CONCRETE SHOULD COME UP ON THE SIDES OF THE PIT OVER THE STAINLESS STEEL LOCKING ANGLE APPROXIMATELY 6 INCHES. CARE MUST BE TAKEN TO KEEP CONDUITS OR ANY OTHER DEBRIS OUT OF PIPING AND CONDUITS RUNNING FROM PIT TO THE FOUNTAIN CAP AT ENDS OF RUNS IF NECESSARY. AFTER COVER HAS SET ANY FORMS THAT MAY HAVE BEEN USED CAN BE REMOVED.

ALL REMAINING PIPING AND CONDUIT CONNECTIONS CAN NOW BE FINISHED. CAPS ON EXHAUST VENT LINE AND REMAINING CONDUIT CONNECTIONS CAN BE REMOVED. AS WITH THE FRESH AIR IN TAKE THE EXHAUST LINE SHOULD BE STUBBED UP 6 INCHES ABOVE FINISHED GRADE AND CAPPED. THE VENT VENT COVER SHOULD BE INSTALLED AFTER ALL PIPING AND CONDUIT WORK IS COMPLETED. MAKE SURE ALL DISCHARGE LINES GO TO THE SPECIFIED LOCATIONS IN FOUNTAIN DISCHARGE MANIFOLD VALVES AND EVEN THOUGH THERE ARE TWO DISCHARGES OF THE SAME SIZE, THEY MUST BE PIPED TO THE CORRECT FEATURE. AFTER ALL CONDUITS ARE CONNECTED AND PIPING IS FINISHED AND TESTED, AREA AROUND PIT CAN BE BACK FILLED CARE MUST BE TAKEN TO FILL UNDER AND AROUND ALL LINES WITH NO Voids, A BACKHOLE OR OTHER MACHINE HAS THE POTENTIAL FOR DAMAGING PIT OR CONNECTIONS. USE EXTRA CARE. ELECTRICAL WIRING CAN NOW BE COMPLETED. ALL INTERNAL WIRING IN PIT FACTORY INSTALLED. REFER TO HALL FOUNTAIN DRAWING FOR NUMBER AND SIZE OF WIRES FOR EACH CONDUIT THAT RETURNS TO CONTROLLER FROM OUTSIDE THE PIT. THE CONDUITS AND WIRES MUST BE CONTINUOUS RUNS WITH NO OPEN ENDS THAT COULD ALLOW WATER TO ENTER CONTROLLER AND PIT THROUGH CONDUITS. SERVICE AMPS AND VOLTAGE REQUIREMENTS ARE STATED ON DRAWING. ALL PIPING AND CONDUIT WORK SHOULD BE DETERMINED BY ELECTRICAL CONTRACTOR OR ENGINEER DEPENDENT ON LENGTH OF RUN. AFTER ALL PIPING IS COMPLETED, CONDUITS ARE RUN AND WIRED AND FOUNTAIN IS COMPLETED PIT WILL BE READY FOR SERVICE. REMEMBER THAT POWER MUST BE SUPPLIED TO SUMP PUMP AT ALL TIMES.

- \* CARE MUST BE TAKEN DURING THE INSTALLATION OF THE PIT AND CONSTRUCTION PHASES OF THE FOUNTAIN TO PROTECT AGAINST WATER ENTERING THE PIT. IF MAIN POWER SUPPLY IS NOT AVAILABLE AT TIME OF INSTALLATION, TEMPORARY POWER MUST BE SUPPLIED TO THE SUMP PUMP TO PROTECT THE EQUIPMENT AND THE SUMP WASTE LINE MUST RUN TO DRAIN. NEVER LEAVE ANY PIPING OR CONDUITS OPEN THAT WOULD ALLOW WATER TO ENTER PIT DURING RAIN OR FLOODING. NEVER LEAVE PIT UNATTENDED WITH COVER OPEN AS EXCESS RAIN COULD DAMAGE EQUIPMENT.
- \* NEVER INSTALL PIT IN A LOW AREA WHERE WATER CAN PUDDLE AND CAUSE FLOODING. GROUND SURFACE SHOULD BE LEVEL OR TILT SLIGHTLY DOWN AND AWAY FROM PIT.
- \* IF ANY POSSIBILITY EXISTS FOR GROUND WATER TO RISE UP ON THE PIT OR A RAIN CONDITION COULD BE EXPECTED TO EXIST THAT COULD CAUSE THE PIT TO FLOAT, A REINFORCED CONCRETE LOCKING SLAB AND BAND MUST BE INSTALLED AS SHOWN.
- \* ALL CONDUITS AND CIRCUITS BETWEEN THE FOUNTAIN CONTROLLER AND ANY IN POOL UNDERWATER JUNCTION BOXES, SENSORS OR OTHER CONTROL DEVICE MUST BE A CONTINUOUS RUN. MAKE NO BREAKS IN THE WIRING. USE NO PULL BOXES. MAKE SURE THAT ALL CONDUITS ARE SEALED TO PROTECT AGAINST WATER ENTERING THE CONTROLLER AND PIT THROUGH UNDER-GROUND CONDUITS.
- \* WHEN MAKING PIPING CONNECTIONS TO PIT AND ALL PHASES OF CONSTRUCTION, CARE MUST BE TAKEN TO KEEP ALL DEBRIS OUT OF THE SYSTEM. DEBRIS CAN CAUSE BLOCKAGE IN PUMP AND LETS AT START-UP. THIS REQUIRES DISASSEMBLY OF THE SYSTEM AND MAY CAUSE DAMAGE.

FINISH MAKING ALL PIPING AND CONDUIT CONNECTIONS BEFORE FINAL BACK FILLING AROUND PIT. CARE MUST BE TAKEN NOT TO DAMAGE PIPING OR CONNECTIONS. ALL WASTE LINES MUST BE PIPED AWAY FROM PIT TO APPROPRIATE DRAINAGE SYSTEM.



**A** Excavate and Set Pit

**B** Install Lower Piping and Concrete Locking Band

**C** Final Piping and Back Filling

## IMPORTANT NOTES:

- \* THIS DRAWING IS SUBJECT TO THE PROJECT ARCHITECTS AND/OR ENGINEERS APPROVAL.
- \* LOCAL BUILDING CODES VARY FROM MUNICIPALITY TO MUNICIPALITY AND MAY OVERRIDE NATIONAL CODES. COMPLIANCE WITH LOCAL CODES MUST BE INDEPENDENTLY VERIFIED BY OWNERS ARCHITECT AND/OR ENGINEER. ANY DEVIATION FROM LOCAL CODES MUST BE BROUGHT TO THE ATTENTION OF HALL FOUNTAINS, INC. IMMEDIATELY.
- \* PIT COMES WITH ALL NECESSARY EQUIPMENT INSTALLED. PRE-PLUMBED AND PRE-WIRED WITH EXTERNAL FITTING READY FOR HOOK-UP TO FOUNTAIN PIPING AND ELECTRICAL CONDUITS THAT ARE BY THE INSTALLATION CONTRACTOR.
- \* PIT MUST BE SET LEVEL FOR PROPER REMOVAL OF ANY WATER THAT MAY ENTER
- \* ORIENT PIT TO THE FOUNTAIN POOL FOR THE MOST EFFICIENT ROUTING OF PIPING. NORMALLY THE MAIN SUCTION INTAKE WILL GO DIRECTLY TO THE POOL. USE THE LEAST AMOUNT OF FITTING POSSIBLE. SCHEDULE 80 PVC PIPING IS REQUIRED UNDER CONCRETE SLABS AND FOOTINGS. WORKING PRESSURES ALLOW THE USE OF SCHEDULE 40 PVC PIPING AND FITTINGS