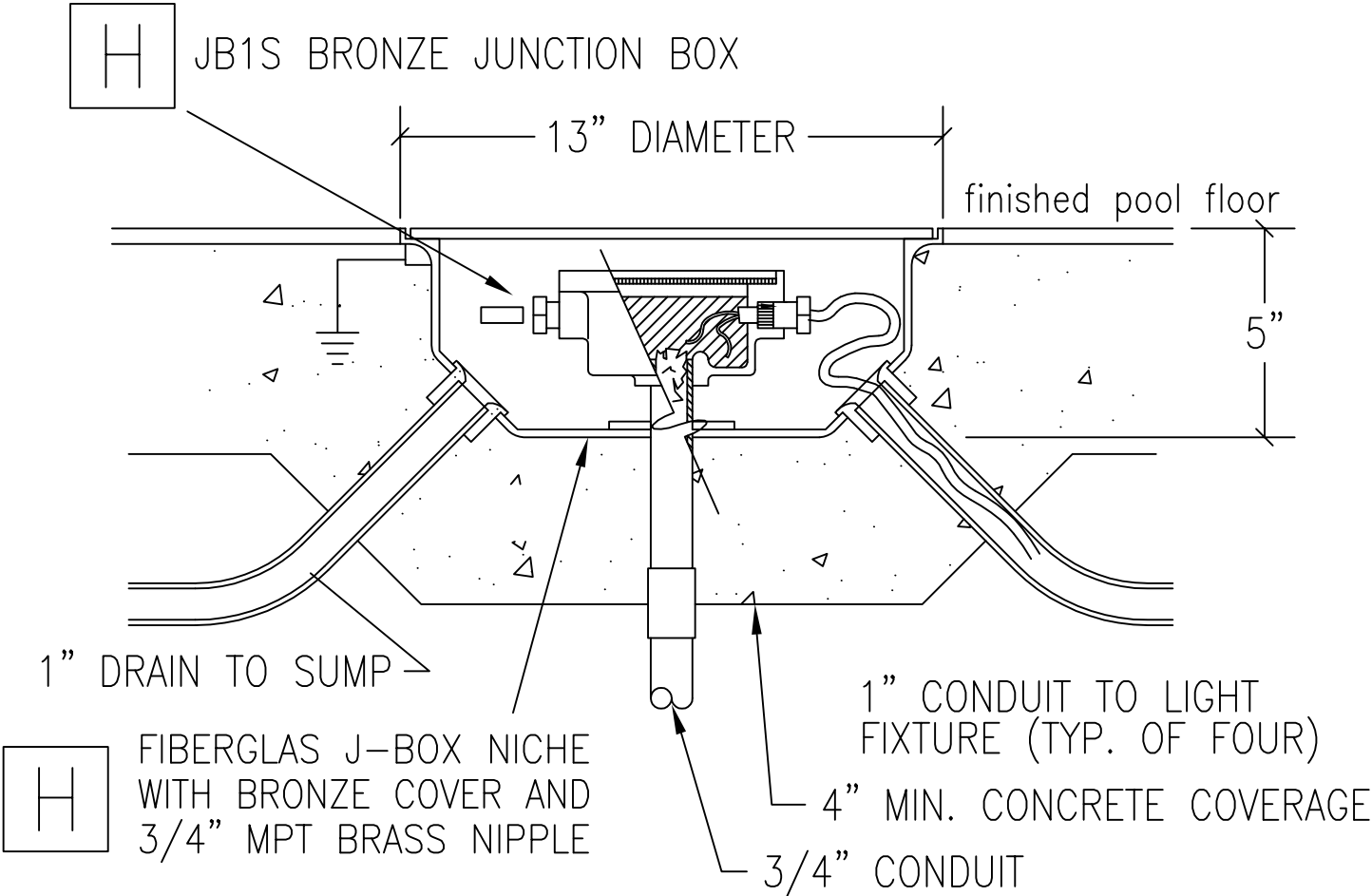


JUNCTION BOX MUST BE POTTED WITH PARAFFIN (INCLUDED) AFTER COMPLETION OF WIRING TO PREVENT CONDENSATION. PACK THE BOTTOM WIRE ENTRANCE OF THE BOX TO CONTAIN PARAFFIN.



JB1N Subm. Junction Box & Niche

N.T.S. Typical Installation Detail