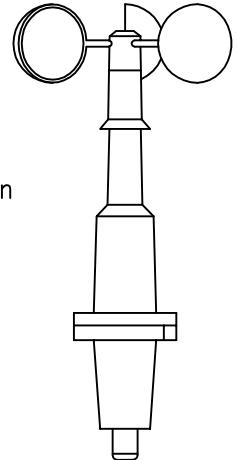


WC100 (single stage)

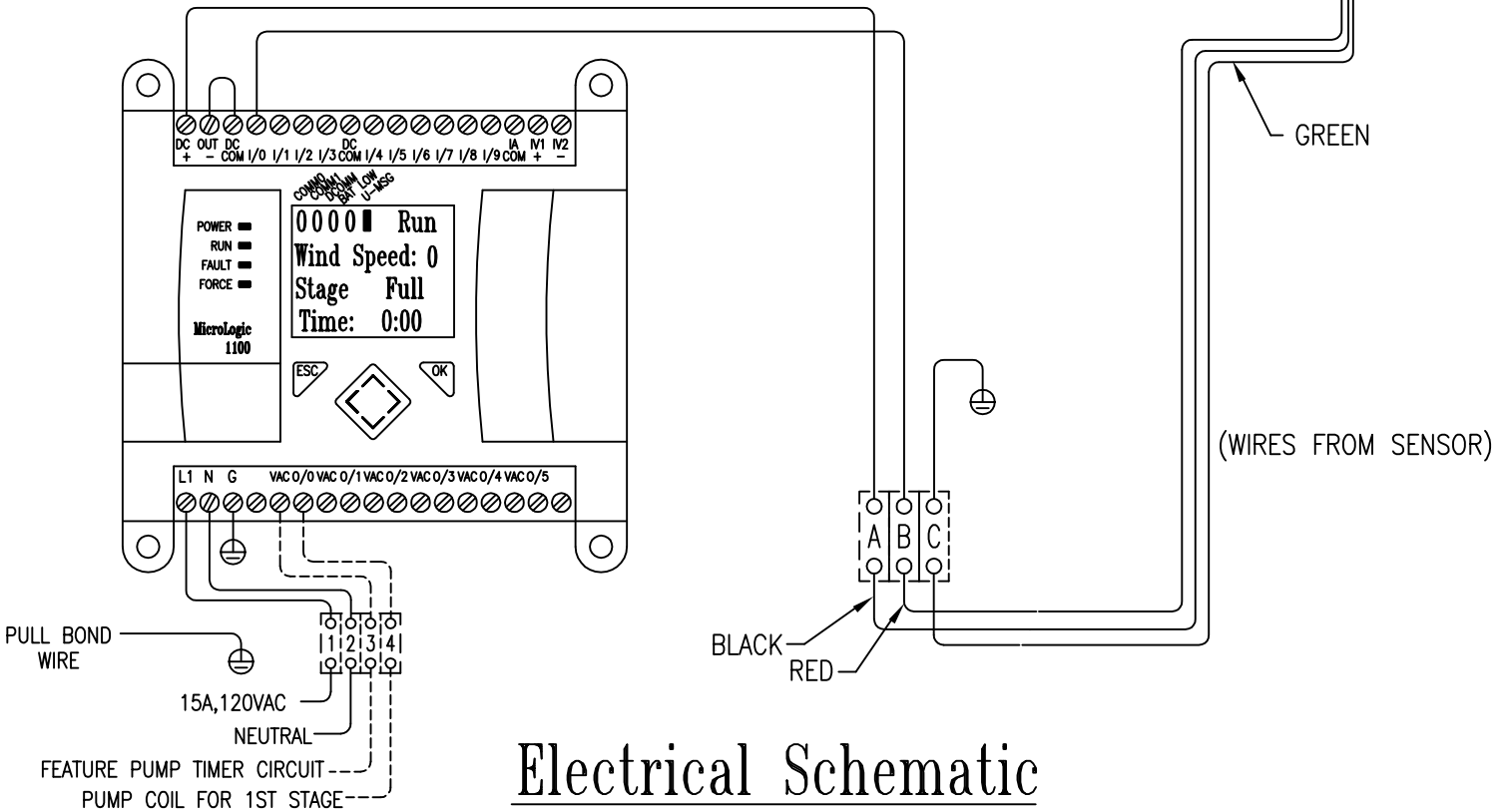
Wind control is a digital micro processor that takes a pulse from an anemometer and activates at a preset wind speed. When activated the control will shut down the fountain system.

When wind control is activated by a high wind condition, each stage will activate at a given condition for 5 minutes. If at any time during the 5 minute period the control sees a high wind condition, it will reset again to a 5 minute period. The control must go for a full 5 minutes for each stage activated. Wind condition must be below set stage to reset .



TO CHANGE WIND SPEED STAGE

- (1) PRESS THE [OK] BUTTON ONCE THE DISPLAY CONTROL PANEL (THIS WILL DISPLAY STAGE 1 VALUE)
- (2) USE ^ OR v KEY ON DISPLAY CONTROL PANEL TO CHANGE VALUE
- (3) PRESS THE [OK] BUTTON ON THE DISPLAY TO RETURN TO NORMAL OPERATION



WC100

Wind Control & Sensor

5500 N.W.22 AVE. FT. LAUDERDALE, FL 33309

PHONE: 1-800-777-4255 * 1-954-484-8530