

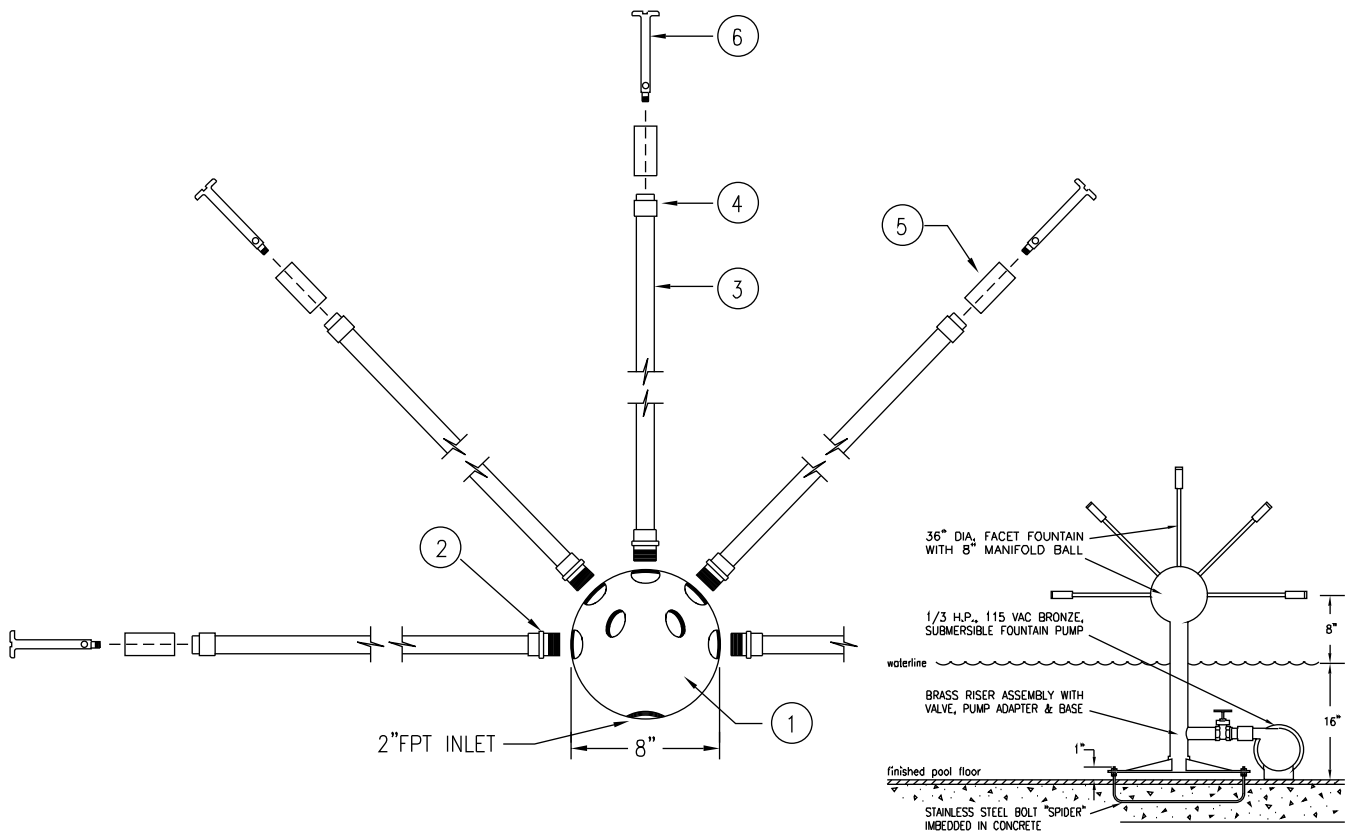
# Specifications:

FCH-4 CAST BRONZE AND BRASS FACET FOUNTAIN HEAD - Is a 4' dia. half-sphere spray pattern from a precision drilled and tapped cast bronze 8" dia. manifold ball with 15 copper and brass facet jet arms and 2" manifold ball inlet.

Model Number	Total Diameter	Number of Rods	Dia. of Manifold	Inlet Size	G.P.M	TDH
HALF-SPHERE FACET FOUNTAIN HEADS						
FCH-4	4'	15	8"	2"	37	15'
FCH-6	6'	31	8"	2-1/2"	85	15'
FCH-8	8'	56	12"	4"	150	20'
FCH-10	10'	87	12"	6"	225	20'
FCH-12	12'	125	12"	6"	320	20'

# Parts List:

- ① CAST BRONZE SPHERE
- ② 1/2" MALE ADAPTOR
- ③ 1/2" K-COPPER JET ROD
- ④ XXXXXXXX
- ⑤ XXXXXXXX
- ⑥ BRASS FACET TIP



## Exploded View

NTS

## Typical Installation Detail

Not To Scale



# FCH Series Half-Sphere Facet Fountain

5500 N.W.22 AVE. FT. LAUDERDALE, FL 33309

PHONE: 1-800-777-4255 \* 1-954-484-8530