

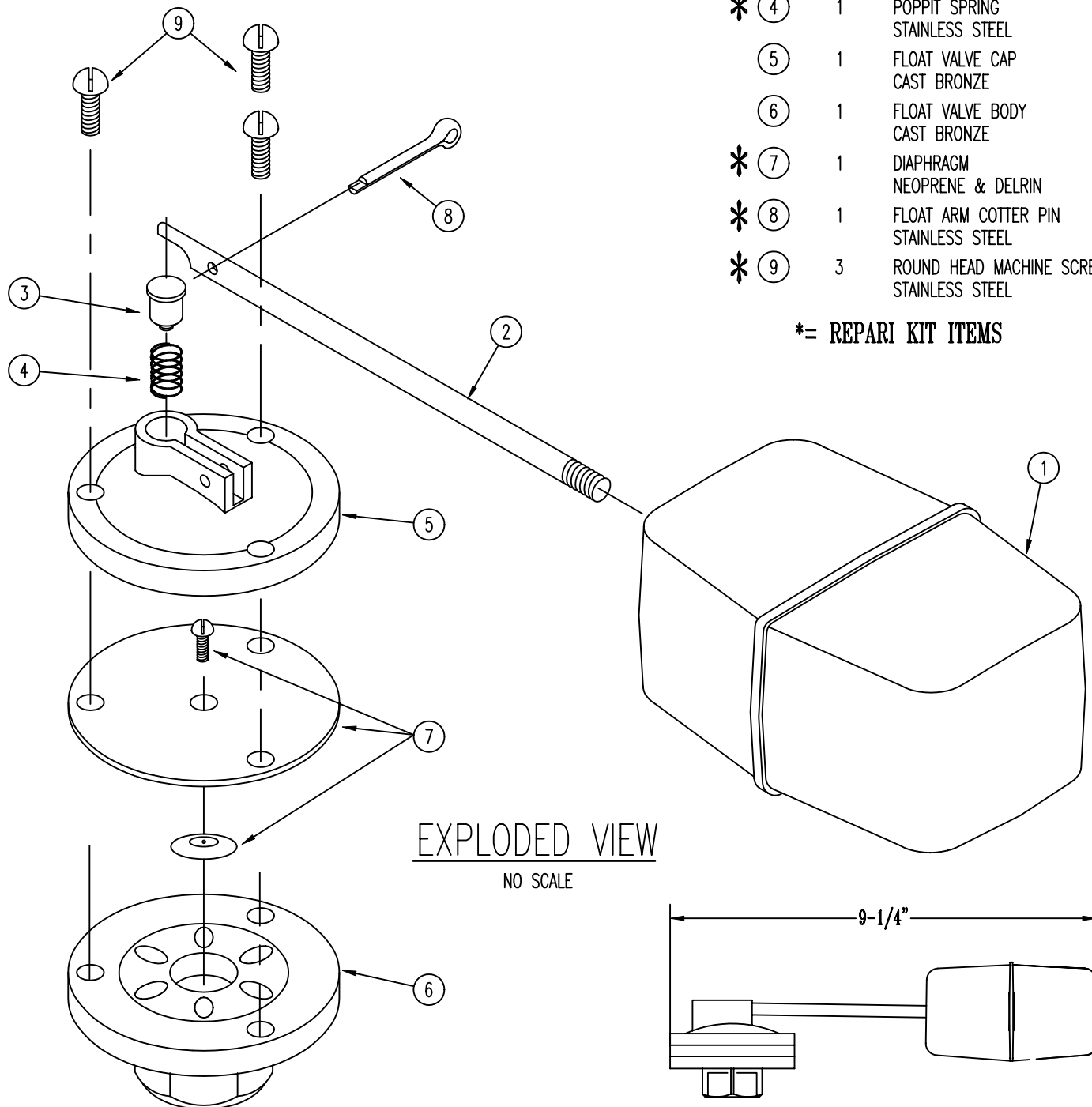
SPECIFICATIONS:

W75 WATER LEVEL FLOAT CONTROL – features include a polypropylene float, 3/4" FPT bronze float valve, and a 3/4" x 6" red brass nipple for waterline stub up. DOES NOT include a vacuum breaker or a backflow preventer (check local codes). Float valve is usually used in conjunction with a polypropylene forming niche and polypropylene cover (not shown). Unit nomenclature is then a WN75 water level float control.

PARTS LIST:

ITEM	QTY.	DESCRIPTION
①	1	FLOAT BODY POLYPROPYLENE
②	1	FLOAT ARM BRASS
* ③	1	POPPIT NATURAL DELRIN
* ④	1	POPPIT SPRING STAINLESS STEEL
⑤	1	FLOAT VALVE CAP CAST BRONZE
⑥	1	FLOAT VALVE BODY CAST BRONZE
* ⑦	1	DIAPHRAGM NEOPRENE & DELRIN
* ⑧	1	FLOAT ARM COTTER PIN STAINLESS STEEL
* ⑨	3	ROUND HEAD MACHINE SCREW STAINLESS STEEL

*= REPAIR KIT ITEMS



W75 Water Supply Float Valve

5500 N.W.22 AVE. FT. LAUDERDALE, FL 33309

PHONE: 1-800-777-4255 * 1-954-484-8530